

Durashield DS-96 - Air Barrier Specifications

Enershield Air Barriers create an effective seal on the doorway. This is achieved by re-circulating the facility air in a laminar (smooth) flow across an open doorway. In addition, the kinetic energy within the moving air generates a barrier preventing leakage of air between two areas with different pressure and climate.

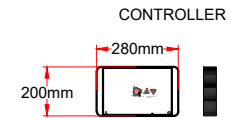
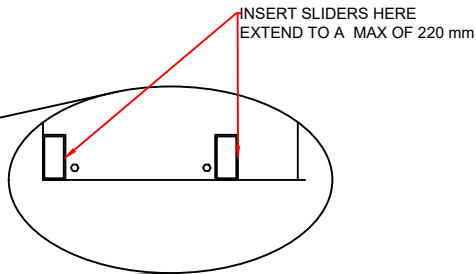
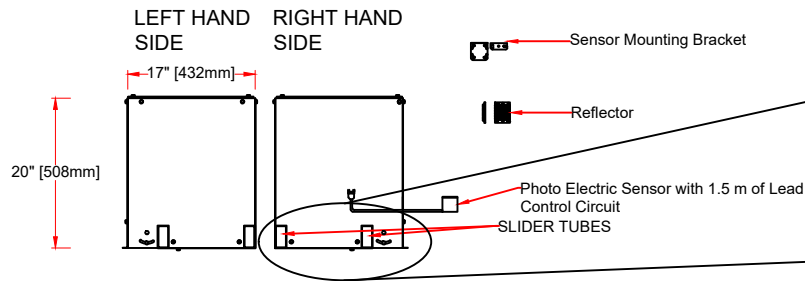
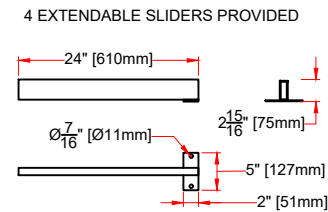
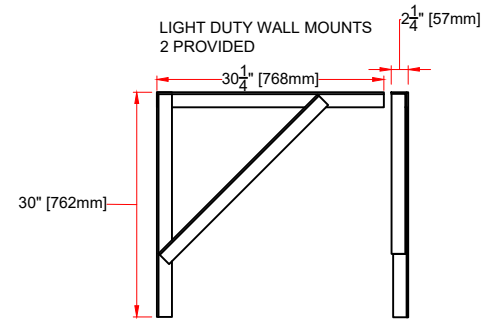
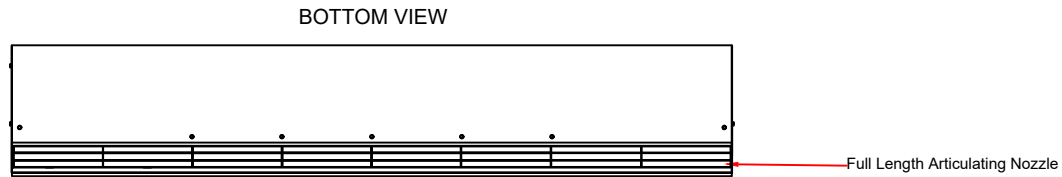
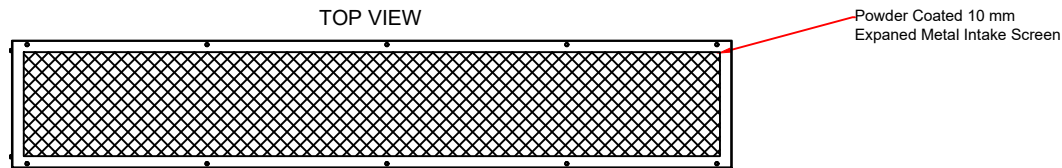
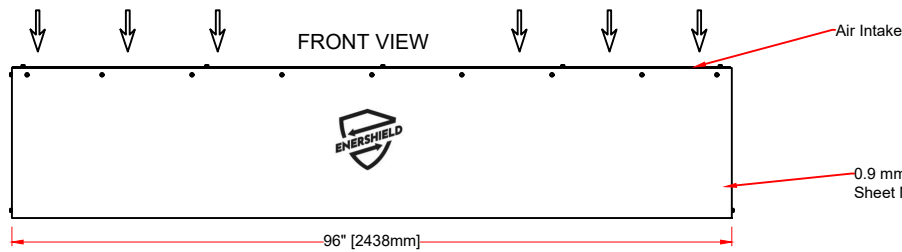
Features: The unit is powder coated 3mm steel box section frame construction, with 0.9mm sheet metal jacket, lined with closed cell acoustic insulation with antimicrobial and fire-resistant coating. Unit is available with optional RAL painting and stainless steel. The unit is manufactured as a single module with equal placement of blowers. Air barrier is provided with powder coated wall brackets and telescopic sliders.

Operating Characteristics: Top air intake is standard, front intake available on request. External 10-speed controller incorporating photoelectric cell door sensor for automatic activation upon door opening. Controller ready for BMS control. Fully articulated diffuser achieving air projection angle of $\pm 20^\circ$ from normal.

Shipped with full IPPC standard wooden crating. Standard manufacturer's warranty two year, extendable to five years with service contract.

DS-96		
	Metric	Imperial
Cabinet Length	2438 mm	96"
Width x Height	432 x 508 mm	17 x 20"
Weight	181 kg	400 lbs
Blowers	4	
Number of Motors	4	
Voltage	208 / 575 V, Single Phase, 60 Hz	
Total Current FLA	14 / 4.8 A	
Total Power	1.4 kw	2 hp
Noise @ 2m	71 dB	
Air Velocity at Outlet	22.9 m/s	4,500 fpm
Total Air Volume	5.33 m ³ /s	11,300 cfm
Outlet Velocity Uniformity	95%	
Diffuser Angle Limits	$\pm 20^\circ$	
Installation Height	3 m Maximum	10' Maximum





UKCA + CE CERTIFIED

ENERSHIELD CANADA
95 Albert Street S.
Sunderland, ON L0C 1H0
Tel: 1-855-272-1272
E-mail: enquiries@enershield.com
Website: www.enershield.com



ENERSHIELD AIR BARRIER

Voltage	208 / 575V Single Phase 60Hz
Motor (s)	4 @ 0.5 hp
Amps FLA	14 / 4.8
Blowers	4

DURASHIELD

Air Velocity (fpm) (m/s)	4500 / 22.9
Air Volume (cfm) (m³/s)	11300 / 5.33
Total Power (hp) (kW)	2 / 1.4
Weight (lbs) (Kg)	400 / 181

DS-96

Air Velocity (fpm) (m/s)	4500 / 22.9
Air Volume (cfm) (m³/s)	11300 / 5.33
Total Power (hp) (kW)	2 / 1.4
Weight (lbs) (Kg)	400 / 181